



Corporate Business Services

BIZTECH
INTERNATIONAL

an ISO 9001:2015 certified
company

WELCOME

to our global corporate business services
where we bring *'change that matters'*

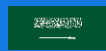
Interiors | Trainings | Business Consultancy
Manpower Supply | Equipment Rental



CA



BAH



KSA



PAK



www.biztech-int.com



www.biztech-int.com

BIZTECH INTERNATIONAL

CHANGE THAT MATTERS

SMART E-House Manufacturing

SCADA | SAS | DMS | EMS





www.biztech-int.com

BIZTECH INTERNATIONAL

CHANGE THAT MATTERS

President's Message

PRESIDENT'S | MESSAGE

Success breeds success. The story of our success is a driving force behind the relentless quest to expand our business. The **BizTech** success started as a dream of one person, but soon became the dream for all workers.

We have built a legacy of excellence, innovation, and trust since our inception in 2002. Operating across the Canada, Bahrain, Saudi Arabia, and Pakistan, we take pride in delivering world-class solutions in Interior Architecture & Design, Business Consulting, General Contracting & Trading, Corporate Business Training, E-House Manufacturing, Global Manpower Supply and HPHT/Heavy Equipment Rental.

Our mission is simple yet profound: *Change That Matters*. We are dedicated to transforming businesses, empowering professionals, and delivering projects that redefine industry standards. With a team of extraordinary and highly qualified experts from around the world, we bring unparalleled expertise to every project, ensuring sustainable success for our clients.

Whether it's driving strategic business growth, executing large-scale contracting projects, delivering internationally accredited training, providing cutting-edge equipment rental solutions, or creating inspiring interior spaces, we remain committed to excellence. Our client-centric approach, combined with innovation and integrity, continues to position us as a trusted partner in diverse industries.

As we look ahead, we remain focused on fostering long-term partnerships, embracing emerging technologies, and delivering value-driven solutions. I invite you to join us on this journey of excellence and transformation.

President

USMAN WARSI

Join us in transforming your business with impactful “**change that truly matters**”

An ISO 9001:2015 Certified Company

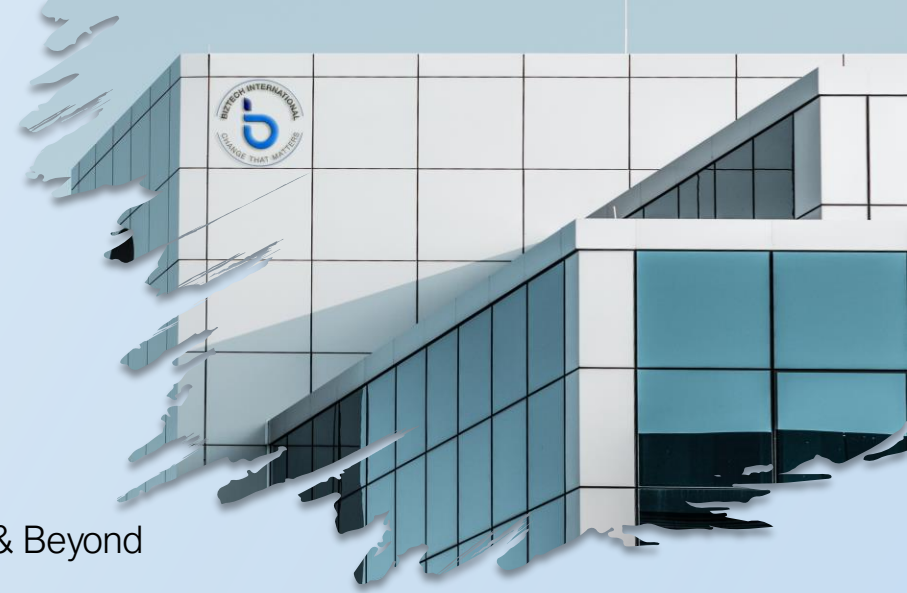


www.biztech-int.com

BIZTECH INTERNATIONAL

CHANGE THAT MATTERS

About Us



ABOUT US | E-HOUSE MANUFACTURING

Established: 2020

Experience: Over 05 Years of Industry Excellence

Industries Served: Construction, Mining, Oil & Gas, Energy, Electrical, Manufacturing, Real Estate & Beyond

Countries Served: Bahrain, Kingdom of Saudi Arabia, Pakistan, UAE

Core Services: E-House Manufacturing & Assembling, Testing, Validation, Integration, SCADA, SAS, DMS, EMS.

We specialize in the complete manufacturing of Electrical Houses (E-Houses), providing turnkey solutions from structural steel fabrication to fully integrated switchgear installation. Our expertise spans the entire production lifecycle, including precision engineering, high-quality welding, modular assembly, and electrical integration.

With a commitment to excellence, we ensure that every E-House meets rigorous industry standards through Factory Acceptance Testing (FAT) and Site Acceptance Testing (SAT). Our solutions are designed for reliability, efficiency, and seamless deployment in demanding industries such as oil & gas, power generation, and infrastructure projects.

Backed by advanced manufacturing capabilities and a highly skilled team, we deliver custom-built E-Houses that enhance operational performance and ensure uninterrupted power distribution in the most challenging environments.

Join us in transforming your business with impactful “**change that truly matters**”

An ISO 9001:2015 Certified Company



www.biztech-int.com

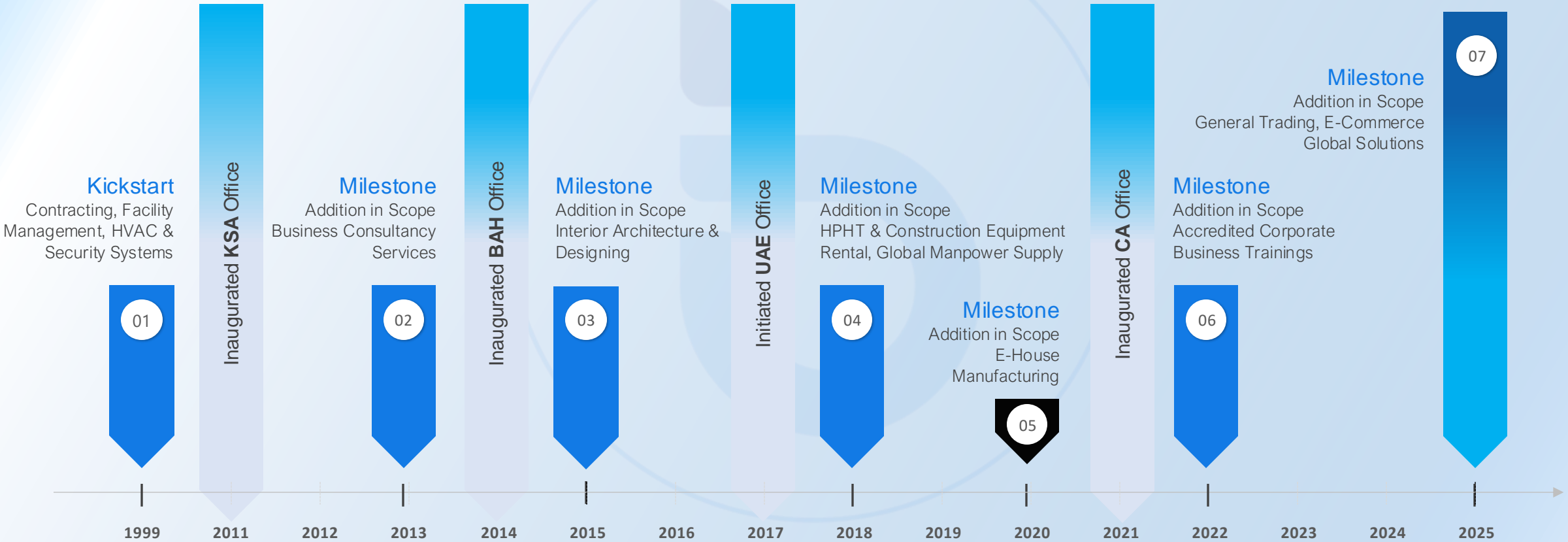
BIZTECH INTERNATIONAL

CHANGE THAT MATTERS

Our Timeline

OUR COMPANY | TIMELINE

Sky is a limit



JV with HFMC

JV with Mansion Interiors

International OEM Partnerships

International Partnership with Awarding Bodies



www.biztech-int.com

BIZTECH INTERNATIONAL

CHANGE THAT MATTERS

Electrical House

An ISO 9001:2015 Certified Company

SMART
House



FACTORY INTEGRATED, TESTED, VALIDATED, PLUG-N-PLAY COMPACT POWER DISTRIBUTION SOLUTION



www.biztech-int.com

BIZTECH INTERNATIONAL

CHANGE THAT MATTERS

OUR SERVICES | E-HOUSE MANUFACTURING

THREE SEGMENTS of the MARKET

Depending on the Type:

- Fixed
- Mobile Substations

Depending on the Application:

- Mining Industries
- Oil & Gas Industry
- Water & Desalination Industries
- Railways
- Plants
- Refineries
- Off-shore

Depending on the Component:

- Switchgear
- Transformer
- Bus Bar
- Variable Frequency Drive
- Power Management System
- HVAC
- Other Auxiliary Systems

WHY AN E-HOUSE?

- Reduce site cost
- Single contract
- Reduce on-site risks
- Pre-commissioning
- Reduce procurement cost
- Product integration
- Reduce management resources
- Maintenance contracts
- One point contact
- Warranty
- Space constraint
- Modular design
- Flexibility of voltage
- Deploy time
- Cost-effective relocation
- Optimal building size

WHY AN E-HOUSE FROM US?

- Pre-Post sales consultancy;
- 24/7 after-sales service;
- Yearly maintenance contracts;
- Local presence (delivery, FAT, SAT, etc. advantages);
- Provide complete operating training (one time);
- Availability of critical spare parts;
- Approved 3rd party suppliers;
- Deep Technical analysis of the request by the E-House design team;
- From design to a delivery - single point of contact for all equipment;

ONE-STOP-SHOP

Professional engineering, custom designs, and standard product offerings driven by experience and backed by supportive, knowledgeable project management and comprehensive field service mean;

BizTech is your one-stop-shop for complete e-House solutions.



www.biztech-int.com

BIZTECH INTERNATIONAL

CHANGE THAT MATTERS

Electrical House

An ISO 9001:2015 Certified Company

E-HOUSE | BRIEF DESCRIPTION

Definition

Electrical House (E-House) is a prefabricated walk-in modular enclosure to house medium and low voltage switchgear as well as auxiliary equipment.

General Scope

The main equipment is medium voltage switchgear mainly at 12, 15, 24, 27, or 36 kV, and low voltage switchgear below 1kV. Typically the E-House is provided with station electric service that includes a panel board, lighting, power outlets, battery banks, transformer for auxiliary services, safety equipment, and air conditioning system.

Objective

The intent of the E-House is to provide medium and low-voltage equipment along with an outdoor enclosure, skid or wheel-mounted ready to operate in the field with minimum installation, commissioning, and start up time. An alternative to traditional on-site building construction (concrete block, brick construction, or similar)

Application

- E-House's are widely used in the Oil and Gas, Water, Plants & Refineries, Off-Shore, Railways, Marine, LSTK EPC, Electric and Mining industries.
- E-House mounted on wheels can be used for emergency power.
- Can also be used for temporary power.
- Main Distribution Boards;
- Low, medium, and high voltage switchgear;
- Low and medium voltage transformers;
- Low and medium voltage motor control centers;
- Low and medium voltage Variable Frequency drives;
- UPS & Batteries;
- AccuSine (stabilizes electrical networks by providing harmonic mitigation, power factor correction, and load balancing);
- Distribution Panels & associated electrical equipment;
- Lighting;

Optional

- SCADA (Supervisory Control & Data Acquisition)
- SAS (Substation Automation System)
- DMS (Distribution Management System)
- EMS (Energy Management System)





www.biztech-int.com

BIZTECH INTERNATIONAL

CHANGE THAT MATTERS

Electrical House

An ISO 9001:2015 Certified Company

E-HOUSE | SPECIFICATION

- **Base (steel structure) & Floor**
 - The base of an E-HOUSE is built with ASTM A36 grade steel which will be welded together in accordance with AWS & by AWS certified welders.
- **Walls & Roof**
 - Walls are made of a welded frame according to ASTM A36 grade steel, covered with a sandwich panel that provides thermal and acoustic insulation.
 - The roof is covered with the sandwich panel to sustain a load of at least 250 kg/m² and winds of 150km/h.
- **HVAC System**
 - Include 1 packaged type air conditioning unit, with auto changeover panel, temperature and thermostats, and contactors for tripping the Air Conditioning units in case of any fire and gas alarm.
- **Fire Detection System**
 - Fire Indicator Panels via sensors located internally within the E-House and VESDA Systems.
- **Lighting & Electrical System**
 - AC Distribution Board
 - Interior Lighting
 - Exterior Lighting
 - Outlets
 - Cabling
 - Grounding
 - Interconnection of Panels
- **Safety Equipment**
 - Electrical Class-2 Gloves
 - Portable Safety Light
 - Labeling/Lawful
 - First Aid Kit
- **Painting & Coating**
 - The surface treatment will be suitable for corrosive & saline environments & UV resistant according to C5-M
 - Coating from approved suppliers.
 - Surface preparation will be done by sandblasting methods.
- **Testing**
 - Factory testing with full documentation





www.biztech-int.com

BIZTECH INTERNATIONAL

CHANGE THAT MATTERS

E-HOUSE | ENGINEERING

01 | Structural Analysis

Interpretation of structural deformation from external loads (air pressure, snow, wind, total weight with equipment)

02 | Thermal Analysis

Thermal deformation and thermal stress analysis of objects during temperature change.

03 | Analysis of Flow

Analysis of characteristic values such as velocity, temperature and pressure of liquid and gas.

04 | Seismic Analysis

As a method to understand the dynamic characteristics of the structure, a mounted module shape is tested to predict whether the structure is resonant or deformed by vibration.

05 | Lighting Calculation Report (can be provided)

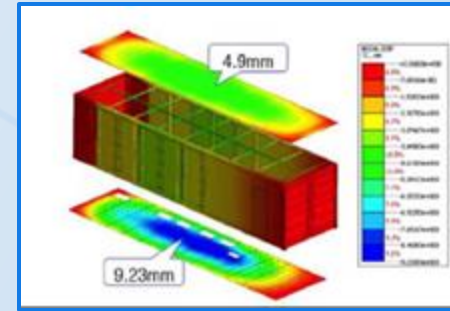
Optimized illumination design by calculating illumination volume.

06 | Foundation Loading Data

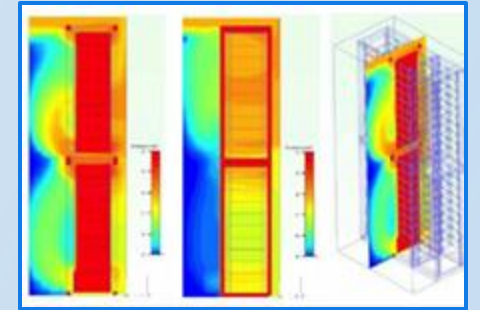
Analysis of the foundation loading data considering the center of gravity of the container.

Electrical House

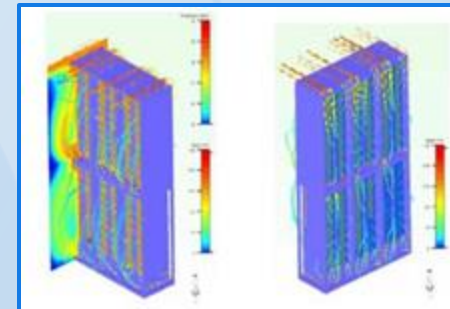
FACTORY INTEGRATED, TESTED, VALIDATED, PLUG-N-PLAY COMPACT POWER DISTRIBUTION SOLUTION



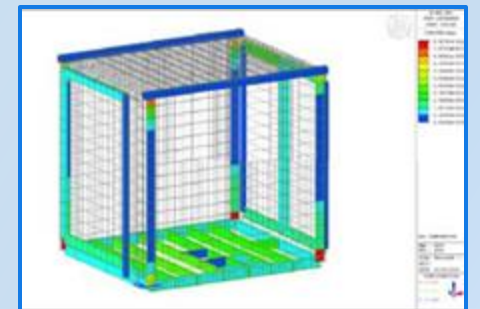
Structural Analysis



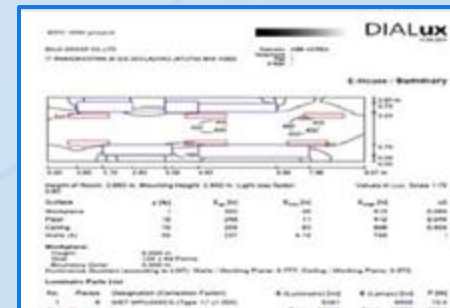
Thermal Analysis



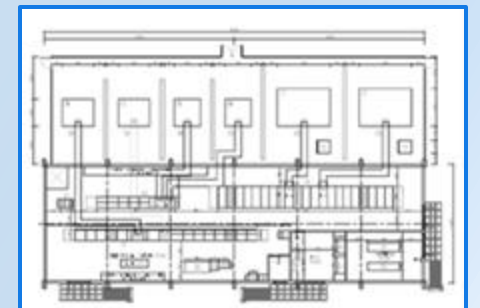
Analysis of Flow



Seismic Analysis



Lighting Calculation Report



Foundation Loading Data



www.biztech-int.com

BIZTECH INTERNATIONAL

CHANGE THAT MATTERS

Electrical House

An ISO 9001:2015 Certified Company

E-HOUSE | SMART E-HOUSE with customer oriented power solution & the newest digital network system integration



01 | SCADA (Supervisory Control & Data Acquisition)

User-oriented graphic environment with full graphic resources and real time working tools;

Support for making full use of IED functions through flawless communication;

Storage of long-term data using the relational database;

Report generation with various formats reflecting user req.

02 | SAS (Substation Automation System)

Makes possible communication with various Intelligent Electronic Devices (IEDs);

Increases the convenience of operation through the remote setting function of the IEDs;

Support for large capacity data communication in real time by applying the OS and TCP / IP Protocol.

03 | DMS (Distribution Management System)

Supports auto-tracing the point of accident;

Automatic decision function in breakdown mode (manual / automatic);

Automatic separation and recovery support in the failed area;

Supports various wired and wireless communication (RF, CDMA, optical).

04 | EMS (Energy Management System)

Uses real time OS to process real time data;

Web monitoring function support (option);

A program which simulates the effect of separating the power line and generator in cases of accident.



www.biztech-int.com

BIZTECH INTERNATIONAL

CHANGE THAT MATTERS

Testimonials

TESTIMONIALS | WHAT OUR CLIENTS SAY ABOUT US !!

- **BizTech** has unique approach and style where they definitely ensure that our business benefits far outweigh the price they charge. **(Large Family Owned Business Owner)**
- **BizTech** Consultants have in-depth understanding of our industry and we never felt need to explain what we wanted, on contrary they kept coming back and started giving proactive suggestions to improve our business and we were amazed to understand that within one month they knew more about our business than we could imagine. **(Large Real Estate Business Owner)**
- Throughout the whole project, **BizTech** provided a professional and reliable service every step of the way. The team delivered the project end-to-end, demonstrating a determination to deliver to the highest standard. The finished product speaks for itself and we would not hesitate to recommend them **(Holding Owners)**
- Having worked with **BizTech** on a previous project back in 2015, we went back to them because of their professional project management and high quality build. Despite this project being particularly challenging – due to working around our fully operational workshop throughout the development – **BizTech** worked with us to ensure the build was completed safely, on time and on budget. **(Large Manufacturing Unit in Automotive ancillary industry)**
- **BizTech** continues to act as our building contractor of choice. We had a desperate need for additional storage as part of our ongoing expansion program, and **BizTech** pulled out all the stops to complete our new 22,000 sq ft three-bay stock warehouse ASAP, actually finishing the work eight weeks ahead of schedule. We are delighted to recommend them and will not hesitate to use them again in the future. **(EPC Contracting Company)**





www.biztech-int.com

BIZTECH INTERNATIONAL

CHANGE THAT MATTERS

CONTACT US | CORPORATE HEAD OFFICE

Let's create something extraordinary together...

For any questions and queries, please contact the below mentioned personnel.

USMAN WARSI

Business Development | Sales | Marketing

info@biztech-int.com | www.biztech-int.com

KSA: +966 54 07 444 37 | BAH: +973 3741 3474



Bahrain Head Office: Office 11, Block 1220, Northern Governorate, Kingdom of Bahrain.

Saudi Arabia Office: P. Code 2431, Saihat, Eastern Region, Kingdom of Saudi Arabia.

Canada Office: Feheregyhazi Blvd 345, Saskatoon, Canada

Pakistan Office: Office # 1, Crown Plaza, Block AA, Bahriya Town, Lahore, Pakistan.

Click below links to view all profiles:

[Business Consultancy](#) | [Interior Architecture & Design](#) | [Smart E-House](#) | [Manpower Supply](#) | [Equipment Rental](#) | [Corporate Business Trainings](#) | [Contracting & Trading](#)

