



Corporate Business Services

BIZTECH
INTERNATIONAL

an ISO 9001:2015 certified
company

WELCOME

to our global corporate business services
where we bring *'change that matters'*

Interiors | Trainings | Business Consultancy
Manpower Supply | Equipment Rental



CA



BAH



KSA



PAK



www.biztech-int.com



www.biztech-int.com

BIZTECH INTERNATIONAL

CHANGE THAT MATTERS

Contracting, Rental & Manufacturing Services

Facility Management | E-House Manufacturing | Equipment Rental | Trading



www.biztech-int.com

BIZTECH INTERNATIONAL

CHANGE THAT MATTERS

President's Message

PRESIDENT'S | MESSAGE

Success breeds success. The story of our success is a driving force behind the relentless quest to expand our business. The BizTech success started as a dream of one person, but soon became the dream for all workers.

We have built a legacy of excellence, innovation, and trust since our inception in 2002. Operating across the Canada, Bahrain, Saudi Arabia, and Pakistan, we take pride in delivering world-class solutions in Interior Architecture & Design, Business Consulting, General Contracting & Trading, Corporate Business Training, E-House Manufacturing, Global Manpower Supply and HPHT/Heavy Equipment Rental.

Our mission is simple yet profound: *Change That Matters*. We are dedicated to transforming businesses, empowering professionals, and delivering projects that redefine industry standards. With a team of extraordinary and highly qualified experts from around the world, we bring unparalleled expertise to every project, ensuring sustainable success for our clients.

Whether it's driving strategic business growth, executing large-scale contracting projects, delivering internationally accredited training, providing cutting-edge equipment rental solutions, or creating inspiring interior spaces, we remain committed to excellence. Our client-centric approach, combined with innovation and integrity, continues to position us as a trusted partner in diverse industries.

As we look ahead, we remain focused on fostering long-term partnerships, embracing emerging technologies, and delivering value-driven solutions. I invite you to join us on this journey of excellence and transformation.

President

USMAN WARSI

Join us in transforming your business with impactful “*change that truly matters*”

An ISO 9001:2015 Certified Company



www.biztech-int.com

BIZTECH INTERNATIONAL

CHANGE THAT MATTERS

Our Policy

An ISO 9001:2015 Certified Company

OUR POLICY | QUALITY & HSE POLICY

QUALITY POLICY

Towards the year 2020, **BizTech's** second-generation goals will be achieved by changing our business model with the required agility to be dynamic and flexible for efficient and effective use of our resources.

To strive for having strategic direction and operational effectiveness by own technologies platform.

Preserving our ideological and governing rules as a tool for governing business conduct by ethical canons.

To have our employees, whose operations and activities effect the quality of our products and services, implement the quality management system.

To strive for continual improvement of the process that result in sustained delivered value for our customers to comply with applicable requirements.

HSE POLICY

BizTech will be an industry leader in product and service delivery based on the highest standards of excellence in HSE protection. **BizTech** committed to conducting its business in a manner at all times that protects the health, safety and welfare of its employees, contractors, customers and other persons involved in our business and to protecting the environment and the security of our workplaces.

In achieving these objectives we will be guided by our HSE policy principles embedded in the company's "**Target Zero**" safety program.

refer: HSE Policy document



Join us in transforming
your business with impactful
"change that truly matters"



www.biztech-int.com

BIZTECH INTERNATIONAL

CHANGE THAT MATTERS

OUR PHILOSOPHY

Our Mission:

To deliver high-quality, cost-effective contracting services through innovation, integrity, and a client-centric approach. We are committed to building lasting relationships, fostering sustainability, and exceeding expectations in every project we undertake.

Our Vision:

To be a leading contracting company recognized for our excellence, reliability, and contribution to shaping sustainable and modern infrastructure that enhances communities and enriches lives.

Our Goals:

The world is changing faster than ever, making it challenging for organizations to keep up with economic challenges, consumer demands, employee preferences, political turmoil, technological advancement, and more. On top of external pressures, old habits, cultures, systems, and a reluctance to change can often hold organizations and leaders back. We're here to change that.

Our Philosophy





www.biztech-int.com

BIZTECH INTERNATIONAL

CHANGE THAT MATTERS

ABOUT US | GENERAL CONTRACTING & TRADING

Established: 1999

Experience: Over 25 Years of Industry Excellence

Industries Served: Construction, Mining, Oil & Gas, Energy, Electrical, Manufacturing, Real Estate & Beyond

Countries Served: Bahrain, Kingdom of Saudi Arabia, Pakistan, UAE

Core Services: Facility Management, MEP, Security Systems, HVAC, Fire Fighting/Alarm, Annual Maintenance, and LSTK Projects

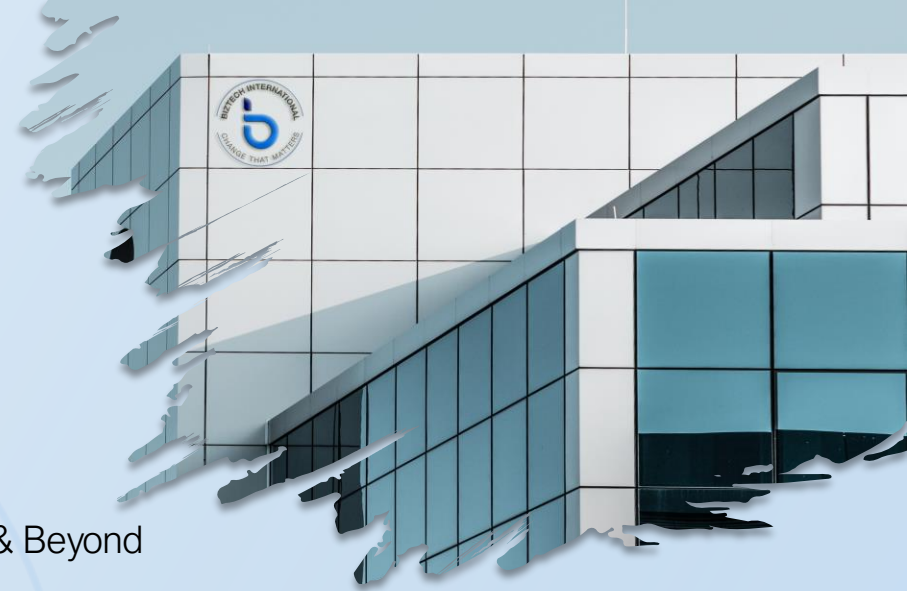
For over 25 years, **BizTech** has been a trusted leader in EPC contracting, trading, and manufacturing sectors, delivering excellence and innovation across diverse industries. With a legacy of quality, reliability, and customer satisfaction, we have built a reputation as a partner of choice for complex and mission-critical projects.

Our Journey

Founded in 1999, we have grown from humble beginnings into a powerhouse in the industry, marked by decades of successful projects and lasting client relationships. Our dedication to continuous improvement and adapting to evolving market needs has enabled us to stay at the forefront of the industry.

What Sets Us Apart

- **Proven Expertise:** A quarter-century of delivering projects on time and within budget.
- **Client-Centric Approach:** Customized solutions designed to meet specific project needs.
- **Innovation & Technology:** Leveraging cutting-edge tools and methodologies to drive efficiency and excellence.
- **Sustainability Commitment:** Focused on eco-friendly practices and sustainable growth.



About Us

Join us in transforming your business with impactful “**change that truly matters**”

An ISO 9001:2015 Certified Company



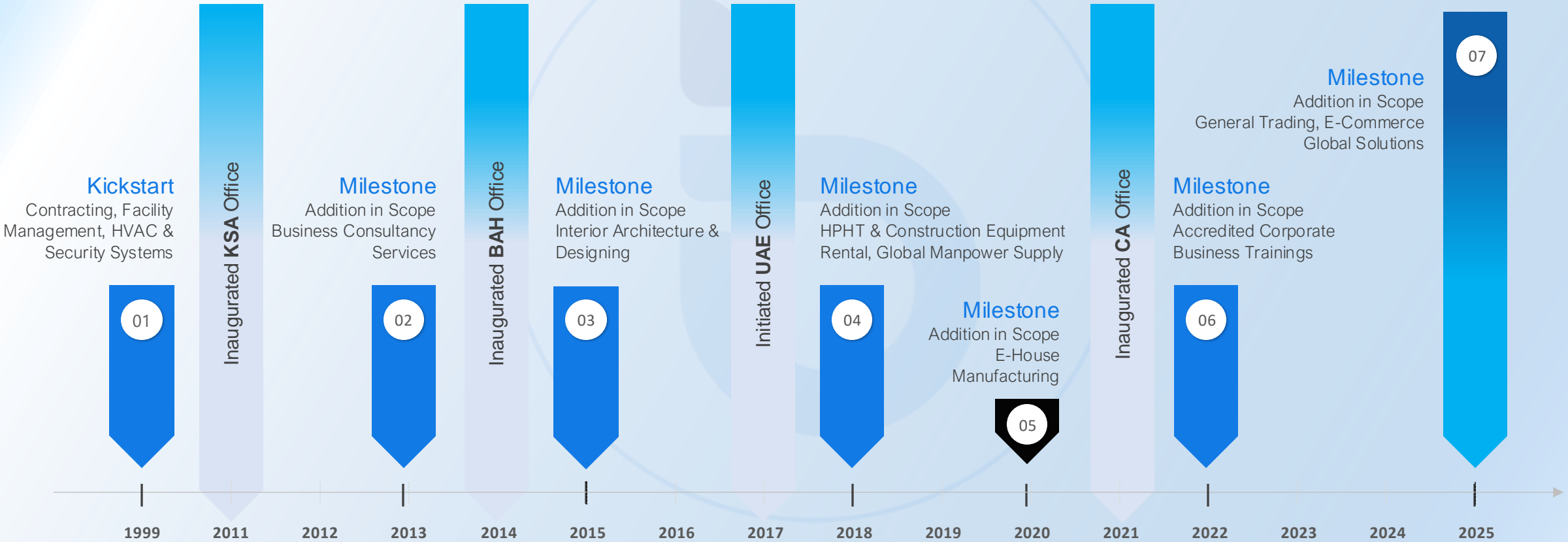
www.biztech-int.com

BIZTECH INTERNATIONAL
CHANGE THAT MATTERS

Our Timeline

OUR COMPANY | TIMELINE

Sky is a limit



JV with HFMC

JV with Mansion Interiors

International OEM Partnerships

International Partnership with Awarding Bodies



www.biztech-int.com

BIZTECH INTERNATIONAL

CHANGE THAT MATTERS

Our Services

OUR SERVICES | FACILITY MANAGEMENT | E-HOUSE MANUFACTURING | HPHT EQUIPMENT RENTAL | GENERAL TRADING

Facility Management Experts

- Optimizing Facilities
- Streamlining Processes
- Integrating Technology

Annual Industrial Maintenance Services

- Predictive
- Preventive
- Prescriptive
- Usage Based Maintenance

Security Systems

- CCTV System
- BMS Systems
- SCADA Systems

Other Services

- Power Generation
- Generators Overhauling
- Repairs & Maintenance

Electromechanical (MEP Works)

- Electrical
- Air Conditioning & Maintenance
- Plumbing

Fire Fighting & Fire Alarm system

- Fire Suppression System
- Fire Doors
- Foam Suppression System

HVAC, Chilled Water system & Ducting

- Heating & Cooling Systems
- Hybrid Split Systems
- Packaged Systems

Contracting LSTK Based

- Civil
- Mechanical
- Electrical

HPHT Equipment Rental

- OEM manufactured equipment
- Well testing full package
- Piping packages 3"602, 2"1502
- Choke manifold
- Crossovers
- Frac tanks
- Surge tanks
- Valves
- Shacks
- Pumps

Electrical House (E-House)

- Is a prefabricated walk-in modular enclosure to house medium and low voltage switchgear as well as auxiliary equipment, in –short, factory integrated, tested, validated, plug-n-play, compact power distribution solution.



www.biztech-int.com

BIZTECH INTERNATIONAL

CHANGE THAT MATTERS

WE ARE PROUD OF

OUR UNIQUE STRENGTHS

We have core expertise and strengths in the following areas:

- **Comprehensive Expertise:**
20+ years of versatile design experience.
- **Cutting-Edge Technology:**
Advanced tools for precision design and visualization.
- **Global Network:**
A proven track record with projects across multiple regions and industries.
- **Collaborative Approach:**
A partnership-driven design process that values client input.
- **Sustainability Focus:**
Eco-friendly designs and materials, reducing environmental impact.

SOME OF OUR PRESTIGIOUS CLIENTS

We are proud to have partnered with a diverse range of esteemed clients, including:

- Future Ceramic & Porcelain Co.
- ARASCO
- Saudi Oger Ltd.
- RIKAZ Development Co.
- ALYAF Industrial Co.
- Southern Province Cement Co. (SPTC)
- Saudi Aramco
- Arabian Drilling Co. (Schlumberger)
- Saudi Power Transformer Company
- OilServ
- Halliburton
- Al Mansoori
- Rawabi Cetco
- Al Muhaidib Contracting.
- Jubail Energy Services Co. (JESCO)
- Ministry of National Guard-Health Affair
- Modern Consortium for Refueling Aircraft Co. Ltd. (MCRA)
- NPS (NESR)
- MBPS
- Schlumberger
- Expro
- Tetra
- Weatherford
- Sanjel
- Baker Huges



www.biztech-int.com

BIZTECH INTERNATIONAL

CHANGE THAT MATTERS

OUR EQUIPMENT | SOME OF OUR EQUIPMENT

- Pressing Machines
- Vulcanizing Machines
- Vulcanizing Welding Machines
- Welding Machines 400.3 X 400 V KH400 Amps [6]
- Welding Machines H.D (NE W Fact)
- Welding Machines (M3070MIG-MAGA400 A, B/G.ZW
- Welding Machines Model Kempoweld
- Band Saw Welding Master
- Band Saw Welding Machines HBS280
- Compressors 24 LTR Italia
- Compressors 185 SLWEFAN Pinter
- Plasma Cutting Welding Machines Power Max
- Compressors Sandblasting Welding Machines
- Nitro Hydraulic Pumps
- Nitro Hydraulic Punchers
- 1.5 TN C15A MEGA SPAIN
- Steco Bending Rolls
- Steco Suction Bending Rolls
- Portable Cut Off 405MM
- Electronic Hoist Cranes 15 | 10 | 5 TON
- Electronic Hoist Cranes 3 | 2 TON
- Crane – 25 Tons | 3 Nos.
- Bulldozers | 3 Nos.
- Excavators | 4 Nos.
- Plate Compactors | 9 Nos.
- Backhoes | 7 Nos.
- Asphalt Paver Machines | 2 Nos.
- Dump Trucks | 17 Nos.
- Graders | 4 Nos.
- Road Rollers | 3 Nos.
- Wheel Loader | 6 No.
- Forklifts Electric 1.6 Tons
- Over Head Cranes 25 | 16 | 10 | 5 | 2 Tons
- Colling Device for Control
- Dust Collector Machines
- Snirkel Scissor Workshop Manlift
- Over Head Cranes 15 Tons Double Girder





www.biztech-int.com

BIZTECH INTERNATIONAL

CHANGE THAT MATTERS

Bahrain Projects

LIST OF PROJECTS | SOME OF OUR BAHRAIN PROJECTS

- Renovation and MEP work at MOFA building at Manama.
- Renovation of British School Bahrain.
- Cave Diner Restaurant construction and turn key basis at Amwaj.
- FM Radio for Daily Tribune Installation of Recording Rooms.
- Construction of 4 Candle Restaurant at Jid Hafs turn key basis.
- Construction of Restaurant and Rooms at Coral Bay Ship Hotel with Airconditioning Complete (FCU, Chillers, Ducting, AHU's).
- Construction of 15 story building and management office.
- Construction of 10 story tower.
- Construction of perfumes factory.
- Construction of waterproof membranes factory.
- Various work at 15 story building sun homes, civil work, finishing work, Gypsum work, Floor tile, Joinery work in Seef district.
- Renovation of Coral Bay beach and Installation of Kitchen Equipment, Installation of two chillers each 200 Ton, Fire Fighting & Fire Alarm System.
- Coral Bay Repairing & Maintenance Contract.
- Maintenance of K. Hotel Chillers and Pump Room, Water Heaters.
- Maintenance of York Chillers at Butter Fly Hotel, Jufair.
- MEP work at Al Hawar School Rifa.
- Various Swimming pools construction in Durrat Bahrain and Hidd
- Ramada Hotel Installation of Chillers, Water Heaters, Fire Alarm & Fire Fighting System.
- Management contract, Refurbishment of Yamama Palace Furnished 45 Apartments in Hooraa.
- Installation of Tiles, Gypsum, and painting work at Damistan Housing project with Terna.
- Renovation of Global Institute Bahrain, 4 story building including MEP.
- Maintenance contract 20 story building Sanabis (Sheikh Jabir).
- Supply & Installation of Chilled water system at Al-Jabria Contracting Head Office Qudabia.
- Maintenance Contract, Supply & Installation of Ducting work at Asghar Ali Factory Hidd.
- Preventive Maintenance Contract for Mansoor Garden Budaiya.
- Annual Preventive Maintenance contract with Shaheeco Company at Adliya (All Package Units).
- Supply & Installation of Airconditioning and Fire fighting System at 15 story building Seef Area Sun Homes.
- Supply & Installation of balcony MS grills at 15 story building Seef Area Sun Homes.
- Supply & Installation of VRV system CCTV, Fire Alarm System at Holiday Villa Hotel Hooraa.



www.biztech-int.com

BIZTECH INTERNATIONAL

CHANGE THAT MATTERS

Bahrain Projects

LIST OF PROJECTS | SOME OF OUR BAHRAIN PROJECTS

- Complete renovation and Chillers Installation of of Balmoral factory for Joinery work at Alba Area.
- Complete renovation & Airconditioning of Shamlan Villa at Rifa.
- Renovation and installation of air-conditioning system at Al Hawar School Rifa.
- Supply & Installation of Split concealed Air-condition system & Installation of Fire fighting System at Al-Sharfi Glass Salmabad.
- Preventive Maintenance of Chillers at Manama Packaging Factory Hidd.
- Supply & installation of CCTV cameras at Asghar Ali Factory.
- MEP work 9 story building Jufair.
- MEP work 5 Story building Mahooz.
- MEP work 14 story tower Hidd.
- MEP work BDC factory Hidd.
- MEP work at Tubli Garden Ministry of Education Project.
- BASS Company Industrial Kitchen Emergency Smoke Exhaust System Installation and synchronized with fire panel.
- Boiler maintenance for National Precast factory.
- Refurbishment of SWCC water treatment plant, Jubail.
- Crown plaza various HVAC parts supply and installations of screw type chillers.
- Maintenance contract 9story building Al Busaiteen (Asghar Ali).
- Tennis court painting and repairing at British school.
- Epoxy paint more than 6000 sqm parking at khamees building.
- Adfa Blanket factory complete annual maintenance.
- Installation of security Aluminum windows more than 300nos at British school Bahrain.
- Sheikh DuaiJe Villa Central air-conditioning at Awali Bahrain.
- Various HVAC and MEP work at International Hotels Bahrain.
- Maintenance contract of Bushido Restaurant Bahrain.
- Various Construction work at Ritz Carlton, Jumaira Bahrain.
- Maintenance & Various finishing work at Orange Tower Jufair.
- HVAC design and installation at Novotal hotel.
- Chillers piping at Reef Island as sub contractor.
- Renovation of Costa Café at Diplomatic area.
- Maintenance contract Cave Restaurant Amwaj.
- Renovation Second Cup Café Bahrain.
- Renovation of Dr Saleh Villah at Rifa.
- Facility Management contract Durrat AL Bahrain various villas.
- Alhwar school Maintenance contract.
- Maintenance contract 24story building Amwaj (Turkish Owner).



www.biztech-int.com

BIZTECH INTERNATIONAL

CHANGE THAT MATTERS

KSA Projects

LIST OF PROJECTS | SOME OF OUR KSA PROJECTS

- Renovation for the Lobby for AL-Shohada Hotel.
- Power Station erection for AL-Toukhi company.
- Erection of Precast Factory, Al Kharj El-Seif Co.
- Labor Camp supply and installation for 500 personnel Seif Factory.
- Princess Noura University, Riyadh External Wall Installation project.
- Princess Noura University ,Riyadh Mechanical & Interior work.
- Holiday INN Crowne Plaza, Riyadh Rooms Renovation.
- Annual Preventive Maintenance for Green City compound.
- Erection & Preventive Maintenance of ADFA Blanket Factory.
- Warehouse for Al-Harbi Constructions.
- Weigh Bridge for United Glass Factory.
- Two Control Rooms in between weigh bridge Yanbu.
- Chain Link Fence for United Glass Factory.
- Nat Pet Building offices, all roofs hollow core slabs.
- Toukhi Power Plant extension, stage 3 steel structure.
- High building amount of steel 15,600 ton.
- Al Rajhi Bank King Fahd Road.
- Preventive maintenance of Arabian Spinning Dammam.
- Repair, trouble shooting and maintenance of existing line.
- Ammar for development company Ware house.
- Haney Mineral Water Factory.
- Al-Salem Est. Aluminums factory.
- Saudi Technical Plastic factory (S.T.P.).
- Al Babtain factory New Industrial.
- Al-raja Company Ware House.
- Rashid Al-Rashid factory with 6 movable over head Crane 10 tons capacity each.
- Ware Houses for H.R.H. Bader bin Saud Bin Abdel.
- Aziz Al Saud Al Kharj Road Area of ware house.
- Youksel Ware House for (SWEC).
- Mosque for H.R.H Bader Bin Abdel Aziz Al Saud.
- Two building consist from 26 flat.
- Testing of fiber attenuation and commission of installed FOC.
- 73. Cable pulling of primary cables through 4-way duct bank and 6-way duct bank.
- Complete installation of Fiber Optic Cable from excavation, laying of FOC, jointing and terminal of FOC to terminal box.
- Pumping room steel structure.



www.biztech-int.com

BIZTECH INTERNATIONAL

CHANGE THAT MATTERS

KSA Projects

LIST OF PROJECTS | SOME OF OUR KSA PROJECTS

- 50 Bed Hospital Dhalam.
- Factory Al-Kharj.
- Maintenance contract Al-Hamlan, Tower 24, story building Riyadh.
- Maintenance contract Farm house, Al-Qawasma Client Al-Kharj.
- Maintenance Contract Al-Marai.
- Facility Management contract Jamjoom Center, Jeddah.
- Facility Management contract Sama Fashion Sary Street, Jeddah.
- Facility Management contract Al-Haram Plaza, Jeddah.
- Facility Management contract Red Tag, Jeddah.
- Facility Management contract Al-Hayat Plaza, Riyadh.
- Complete installation of primary and secondary line, from excavation, laying of duct banks, manhole, hand hole, cabinets, and protection post and site restoration.
- Cable pulling of primary line on duct banks and secondary line.
- Jointing on manhole, handhole, near DP location. Terminal blocks preparation for cabinets.
- Installation of BSW's service line, complete with U-guard, plate and two pairs terminals.
- High Rising Offices Building for Abu-Thiyab rent car Area.
- Cooling Water Tank for united glass factory, Capacity.
- Warehouse Box Shop for united glass factory, area 5000 sqm.
- Warehouse for C.I.C. International Construction Company.
- Underground Water Tank for C.I.C.
- Al-Bilad Bank, 3 branches.
- Enjaz for transfers, 8 branches.
- Renovation for the Lobby for AL-Shohada Hotel.
- Power Station for AL-Toukhi company, area 1800 sqm, 2000 sqm and area 2400 sqm.
- Preventive maintenance for MANSOURA & AL-ROWAD Int. Schools.
- YANSAB Petrochemical Complex (Sabic).
- Gulf Farabi Petro Chemical.
- Saudi Kayan, Sab-Tank Project.
- Installation, Fabrication of Telecom Shelters (relay station) & Antenna.
- Excavation and installation of 110 mm² 6-way duct banks. Span 1 km.
- Installation of manholes on site including support channels, manholes ladder, manhole ladder, manhole cover.



www.biztech-int.com

BIZTECH INTERNATIONAL

CHANGE THAT MATTERS

Some Projects

LIST OF PROJECTS | SOME PICTURES OF OUR PROJECTS



AL MUTLAQ BUILDING



AL MURLOC & BU NUHAYAH



ZENY COMPOUND (20 VILLA's)



MAKKAH AL MUKARAMA



DAMMAM HILLS PROJECT 44 VILLAS



AL RAJHI, KHOBAR (CROWN PLAZA)



AL SALIMI VILLA's



DIPLOMATIC AREA BAHRAIN
An ISO 9001:2015 Certified Company



www.biztech-int.com

BIZTECH INTERNATIONAL

CHANGE THAT MATTERS

Some Projects

LIST OF PROJECTS | SOME PICTURES OF OUR PROJECTS



Some Electrical Projects in Dammam, Khobar & Dhahran
Kingdom of Saudi Arabia



www.biztech-int.com

BIZTECH INTERNATIONAL
CHANGE THAT MATTERS

Some Projects

LIST OF PROJECTS | SOME PICTURES OF OUR PROJECTS



Air Craft Security Aviation Complete Fueling Stations

Qasim | Do Admi | Abha | Raffa | Taif | Wadi Dawasir | Dammam | Jeddah

An ISO 9001:2015 Certified Company



www.biztech-int.com

BIZTECH INTERNATIONAL

CHANGE THAT MATTERS

Equipment Rental

EQUIPMENT RENTAL | RENTAL OF OIL FIELD HPHT AND CONSTRUCTION HEAVY EQUIPMENT

We provide, oil field service equipment particularly for upstream sector service and drilling companies, completion jobs, chemical, water, nitrogen operations.

OIL FIELD EQUIPMENT

- Vast variety of Crossovers | All types of fittings
- High/Low Pressure Valves
- Frac Tanks both Chemical Mixer and normal Atmospheric
- Heavy Duty Compressors
- High/Low Pressure Choke Manifolds
- Piping Works i.e. 3" Fig 602 & 4" Fig 602 | 2" 1502
- Heavy Duty Pumps
- Surge Tanks etc.
- Expendable Choke System ECS
- Complete Well Testing Packages
- Safety equipment supply (H2S Safety, PPE, Breathing Air Equip.

CONSTRUCTION EQUIPMENT

- Cranes
- Bulldozers
- Excavators
- Backhoes
- Compactors
- Dump Trucks
- Graders
- Road Rollers
- Wheel Loaders
- Forklifts
- Trailers (Low and Flatbed)
- Manlifts
- Generators





www.biztech-int.com

BIZTECH INTERNATIONAL

CHANGE THAT MATTERS

Electrical House

An ISO 9001:2015 Certified Company

SMART
House



FACTORY INTEGRATED, TESTED, VALIDATED, PLUG-N-PLAY COMPACT POWER DISTRIBUTION SOLUTION



www.biztech-int.com

BIZTECH INTERNATIONAL

CHANGE THAT MATTERS

E-HOUSE | MANUFACTURING

THREE SEGMENTS of the MARKET

Depending on the Type:

- Fixed
- Mobile Substations

Depending on the Application:

- Mining Industries
- Oil & Gas Industry
- Water & Desalination Industries
- Railways
- Plants
- Refineries
- Off-shore

Depending on the Component:

- Switchgear
- Transformer
- Bus Bar
- Variable Frequency Drive
- Power Management System
- HVAC
- Other Auxiliary Systems

WHY AN E-HOUSE?

- Reduce site cost
- Single contract
- Reduce on-site risks
- Pre-commissioning
- Reduce procurement cost
- Product integration
- Reduce management resources
- Maintenance contracts
- One point contact
- Warranty
- Space constraint
- Modular design
- Flexibility of voltage
- Deploy time
- Cost-effective relocation
- Optimal building size

WHY AN E-HOUSE FROM US?

- Pre-Post sales consultancy;
- 24/7 after-sales service;
- Yearly maintenance contracts;
- Local presence (delivery, FAT, SAT, etc. advantages);
- Provide complete operating training (one time);
- Availability of critical spare parts;
- Approved 3rd party suppliers;
- Deep Technical analysis of the request by the E-House design team;
- From design to a delivery - single point of contact for all equipment;

ONE-STOP-SHOP

Professional engineering, custom designs, and standard product offerings driven by experience and backed by supportive, knowledgeable project management and comprehensive field service mean;

BizTech is your one-stop-shop for complete e-House solutions.



www.biztech-int.com

BIZTECH INTERNATIONAL

CHANGE THAT MATTERS

Electrical House

An ISO 9001:2015 Certified Company

E-HOUSE | BRIEF DESCRIPTION

Definition

Electrical House (E-House) is a prefabricated walk-in modular enclosure to house medium and low voltage switchgear as well as auxiliary equipment.

General Scope

The main equipment is medium voltage switchgear mainly at 12, 15, 24, 27, or 36 kV, and low voltage switchgear below 1kV. Typically the E-House is provided with station electric service that includes a panel board, lighting, power outlets, battery banks, transformer for auxiliary services, safety equipment, and air conditioning system.

Objective

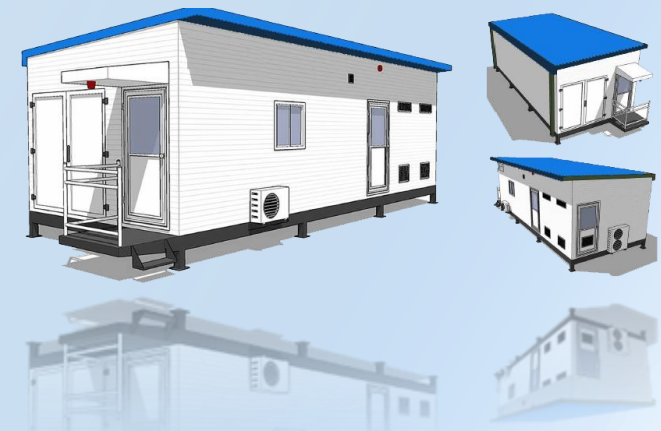
The intent of the E-House is to provide medium and low-voltage equipment along with an outdoor enclosure, skid or wheel-mounted ready to operate in the field with minimum installation, commissioning, and start up time. An alternative to traditional on-site building construction (concrete block, brick construction, or similar)

Application

- E-House's are widely used in the Oil and Gas, Water, Plants & Refineries, Off-Shore, Railways, Marine, LSTK EPC, Electric and Mining industries.
- E-House mounted on wheels can be used for emergency power.
- Can also be used for temporary power.
- Main Distribution Boards;
- Low, medium, and high voltage switchgear;
- Low and medium voltage transformers;
- Low and medium voltage motor control centers;
- Low and medium voltage Variable Frequency drives;
- UPS & Batteries;
- AccuSine (stabilizes electrical networks by providing harmonic mitigation, power factor correction, and load balancing);
- Distribution Panels & associated electrical equipment;
- Lighting;

Optional

- **SCADA** (Supervisory Control & Data Acquisition)
- **SAS** (Substation Automation System)
- **DMS** (Distribution Management System)
- **EMS** (Energy Management System)





www.biztech-int.com

BIZTECH INTERNATIONAL

CHANGE THAT MATTERS

Electrical House

An ISO 9001:2015 Certified Company

E-HOUSE | SPECIFICATION

- **Base (steel structure) & Floor**
 - The base of an E-HOUSE is built with ASTM A36 grade steel which will be welded together in accordance with AWS & by AWS certified welders.
- **Walls & Roof**
 - Walls are made of a welded frame according to ASTM A36 grade steel, covered with a sandwich panel that provides thermal and acoustic insulation.
 - The roof is covered with the sandwich panel to sustain a load of at least 250 kg/m² and winds of 150km/h.
- **HVAC System**
 - Include 1 packaged type air conditioning unit, with auto changeover panel, temperature and thermostats, and contactors for tripping the Air Conditioning units in case of any fire and gas alarm.
- **Fire Detection System**
 - Fire Indicator Panels via sensors located internally within the E-House and VESDA Systems.
- **Lighting & Electrical System**
 - AC Distribution Board
 - Interior Lighting
 - Exterior Lighting
 - Outlets
 - Cabling
 - Grounding
 - Interconnection of Panels
- **Safety Equipment**
 - Electrical Class-2 Gloves
 - Portable Safety Light
 - Labeling/Lawful
 - First Aid Kit
- **Painting & Coating**
 - The surface treatment will be suitable for corrosive & saline environments & UV resistant according to C5-M
 - Coating from approved suppliers.
 - Surface preparation will be done by sandblasting methods.
- **Testing**
 - Factory testing with full documentation





www.biztech-int.com

BIZTECH INTERNATIONAL

CHANGE THAT MATTERS

E-HOUSE | ENGINEERING

01 | Structural Analysis

Interpretation of structural deformation from external loads (air pressure, snow, wind, total weight with equipment)

02 | Thermal Analysis

Thermal deformation and thermal stress analysis of objects during temperature change.

03 | Analysis of Flow

Analysis of characteristic values such as velocity, temperature and pressure of liquid and gas.

04 | Seismic Analysis

As a method to understand the dynamic characteristics of the structure, a mounted module shape is tested to predict whether the structure is resonant or deformed by vibration.

05 | Lighting Calculation Report (can be provided)

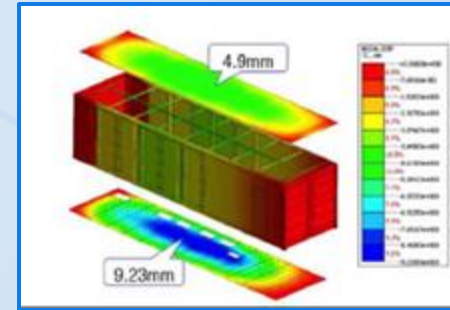
Optimized illumination design by calculating illumination volume.

06 | Foundation Loading Data

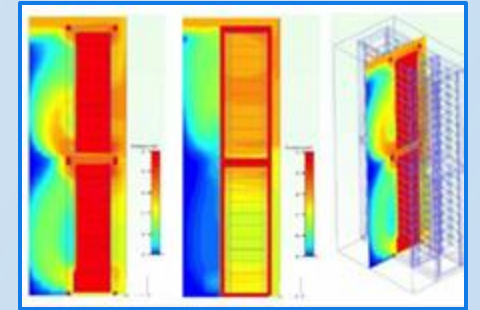
Analysis of the foundation loading data considering the center of gravity of the container.

Electrical House

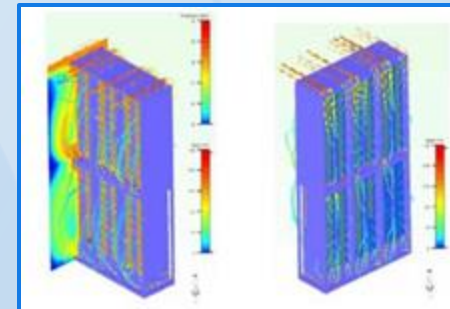
FACTORY INTEGRATED, TESTED, VALIDATED, PLUG-N-PLAY COMPACT POWER DISTRIBUTION SOLUTION



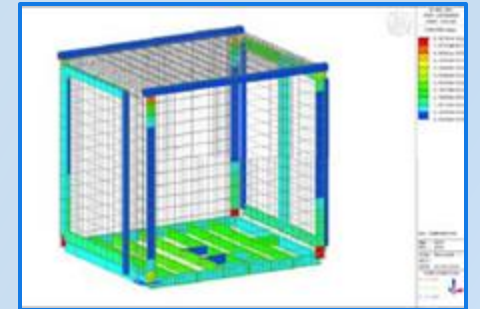
Structural Analysis



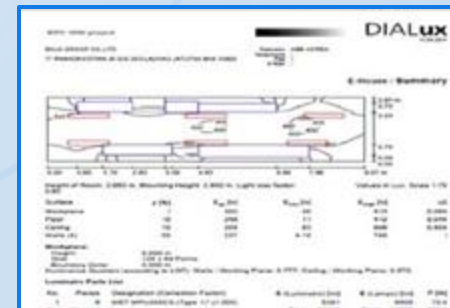
Thermal Analysis



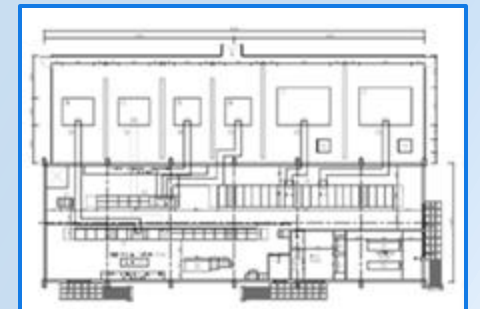
Analysis of Flow



Seismic Analysis



Lighting Calculation Report



Foundation Loading Data



www.biztech-int.com

BIZTECH INTERNATIONAL

CHANGE THAT MATTERS

Electrical House

An ISO 9001:2015 Certified Company

E-HOUSE | SMART E-HOUSE with customer oriented power solution & the newest digital network system integration



01 | SCADA (Supervisory Control & Data Acquisition)

User-oriented graphic environment with full graphic resources and real time working tools;

Support for making full use of IED functions through flawless communication;

Storage of long-term data using the relational database;

Report generation with various formats reflecting user req.

02 | SAS (Substation Automation System)

Makes possible communication with various Intelligent Electronic Devices (IEDs);

Increases the convenience of operation through the remote setting function of the IEDs;

Support for large capacity data communication in real time by applying the OS and TCP / IP Protocol.

03 | DMS (Distribution Management System)

Supports auto-tracing the point of accident;

Automatic decision function in breakdown mode (manual / automatic);

Automatic separation and recovery support in the failed area;

Supports various wired and wireless communication (RF, CDMA, optical).

04 | EMS (Energy Management System)

Uses real time OS to process real time data;

Web monitoring function support (option);

A program which simulates the effect of separating the power line and generator in cases of accident.



www.biztech-int.com

BIZTECH INTERNATIONAL

CHANGE THAT MATTERS

Testimonials

TESTIMONIALS | WHAT OUR CLIENTS SAY ABOUT US !!

- **BizTech** has unique approach and style where they definitely ensure that our business benefits far outweigh the price they charge. **(Large Family Owned Business Owner)**
- **BizTech** Consultants have in-depth understanding of our industry and we never felt need to explain what we wanted, on contrary they kept coming back and started giving proactive suggestions to improve our business and we were amazed to understand that within one month they knew more about our business than we could imagine. **(Large Real Estate Business Owner)**
- Throughout the whole project, **BizTech** provided a professional and reliable service every step of the way. The team delivered the project end-to-end, demonstrating a determination to deliver to the highest standard. The finished product speaks for itself and we would not hesitate to recommend them **(Holding Owners)**
- Having worked with **BizTech** on a previous project back in 2015, we went back to them because of their professional project management and high quality build. Despite this project being particularly challenging – due to working around our fully operational workshop throughout the development – **BizTech** worked with us to ensure the build was completed safely, on time and on budget. **(Large Manufacturing Unit in Automotive ancillary industry)**
- **BizTech** continues to act as our building contractor of choice. We had a desperate need for additional storage as part of our ongoing expansion program, and **BizTech** pulled out all the stops to complete our new 22,000 sq ft three-bay stock warehouse ASAP, actually finishing the work eight weeks ahead of schedule. We are delighted to recommend them and will not hesitate to use them again in the future. **(EPC Contracting Company)**





www.biztech-int.com

BIZTECH INTERNATIONAL

CHANGE THAT MATTERS

CONTACT US | CORPORATE HEAD OFFICE

Let's create something extraordinary together...

For any questions and queries, please contact the below mentioned personnel.

USMAN WARSI

Business Development | Sales | Marketing

info@biztech-int.com | www.biztech-int.com

KSA: +966 54 07 444 37 | BAH: +973 3741 3474



Bahrain Head Office: Office 11, Block 1220, Northern Governorate, Kingdom of Bahrain.

Saudi Arabia Office: P. Code 2431, Saihat, Eastern Region, Kingdom of Saudi Arabia.

Canada Office: Feheregyhazi Blvd 345, Saskatoon, Canada

Pakistan Office: Office # 1, Crown Plaza, Block AA, Bahriya Town, Lahore, Pakistan.

Click below links to view all profiles:

[Business Consultancy](#) | [Interior Architecture & Design](#) | [Smart E-House](#) | [Manpower Supply](#) | [Equipment Rental](#) | [Corporate Business Trainings](#) | [Contracting & Trading](#)

